

typical 2000mm high x 210mm deep x 180mm wide Eco-Pillow wrapped with 60x60x1mm GAL steel mesh, recycled polyester face fabric and recycled polyester wadding

typical 216mm x 100mm x 8mm wall fixing bracket

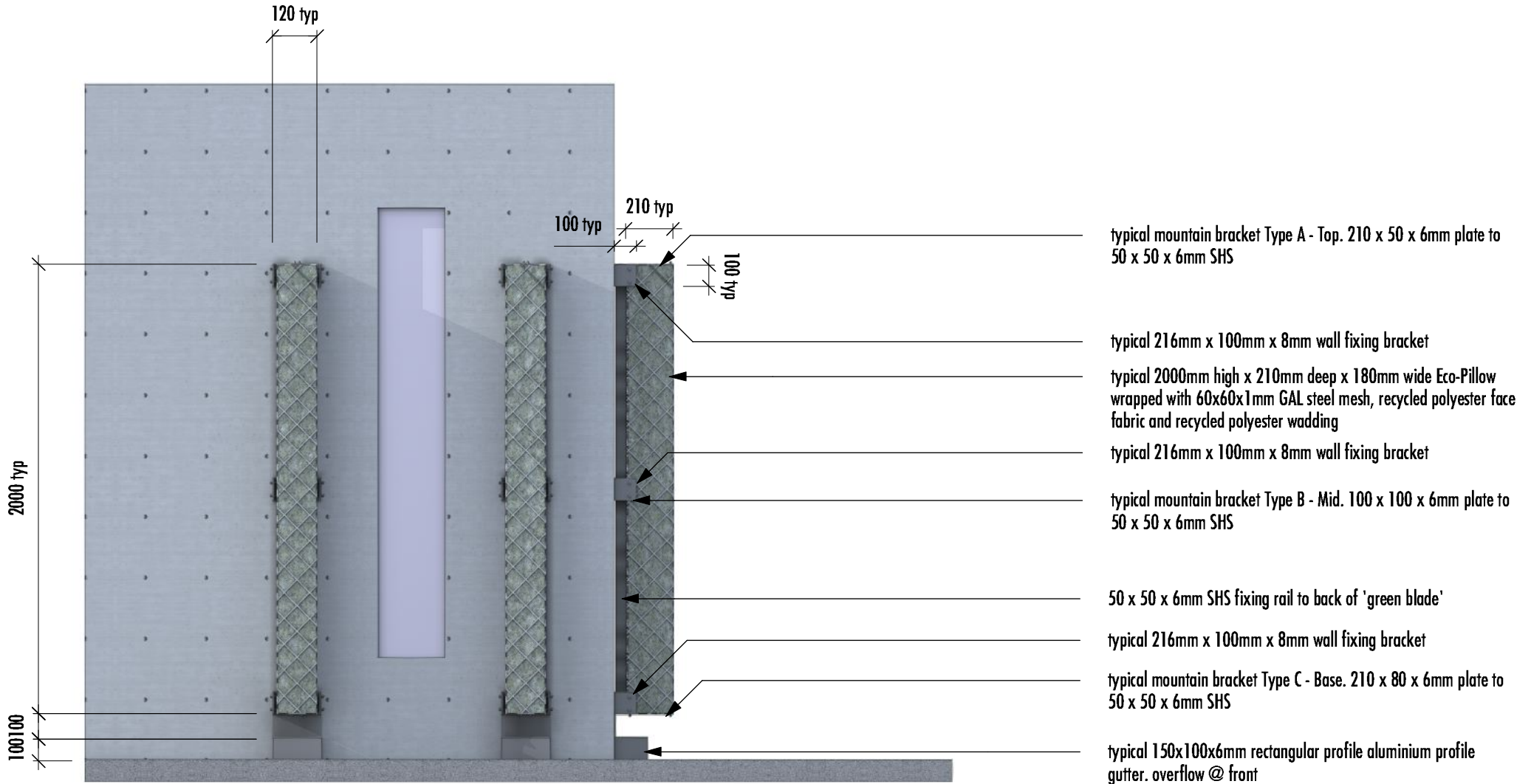
typical mountain bracket Type A - Top. 210 x 50 x 6mm plate to 50 x 50 x 6mm SHS

NOTE: minimum fixing wall requirements. Blockwork: wall must be 140mm thick, 12MPa minimum block strength and be able to carry 1.1kn tension and 0.9kn shear at each fixing, to be checked by Eng. Concrete: wall must be 150 minimum thick, 25MPa minimum concrete strength and contain reinforcement. Brickwork: wall must be 140 minimum thick, 45MPa minimum brick strength and be 140 minimum brick strength and be able to carry 1.1kn tension and 0.9kn shear at each fixing, to be checked by an Eng.

0-01
rev B

GREEN BLADE - PLAN VIEW

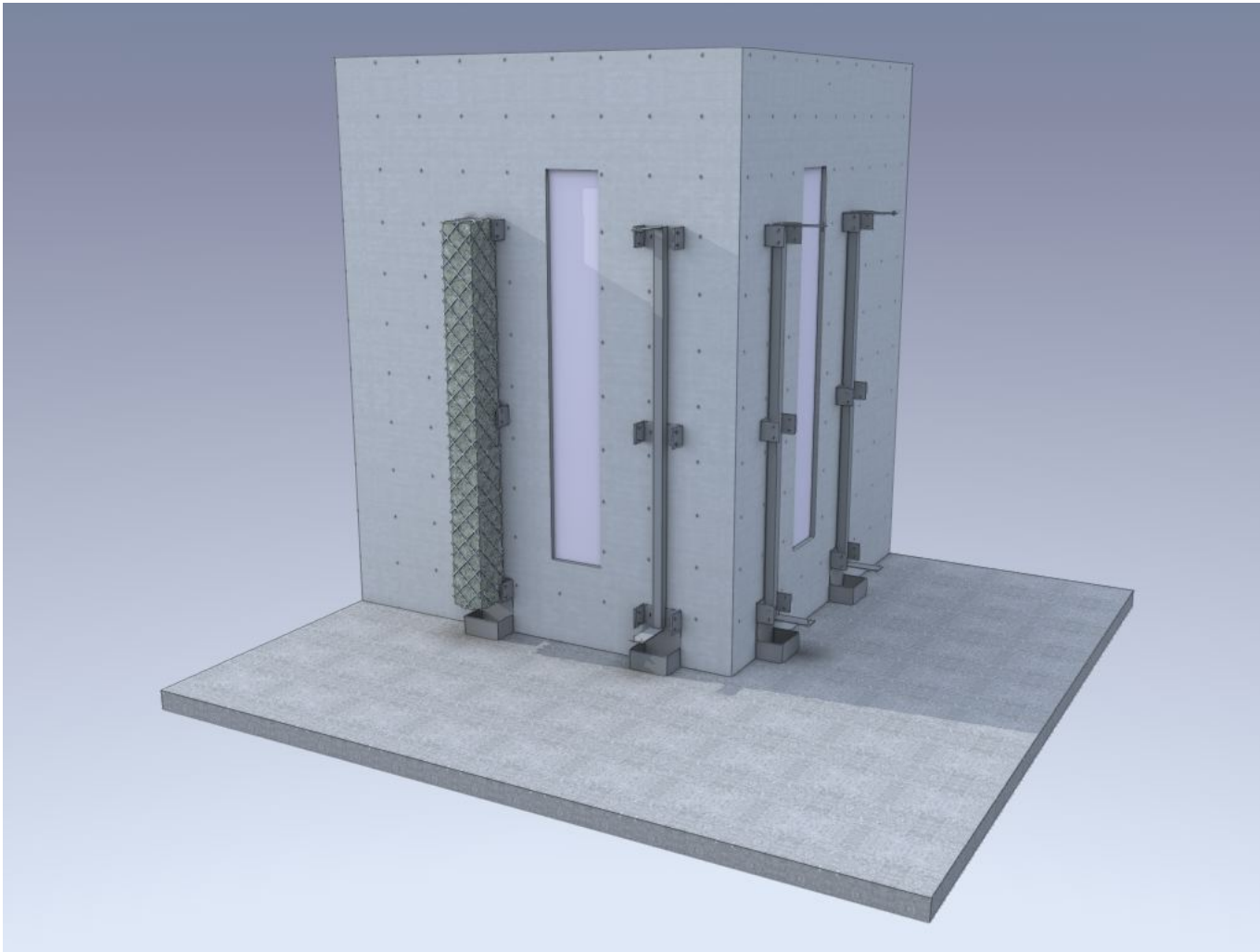
Plan



0-02
rev B

GREEN BLADE - FRONT VIEW

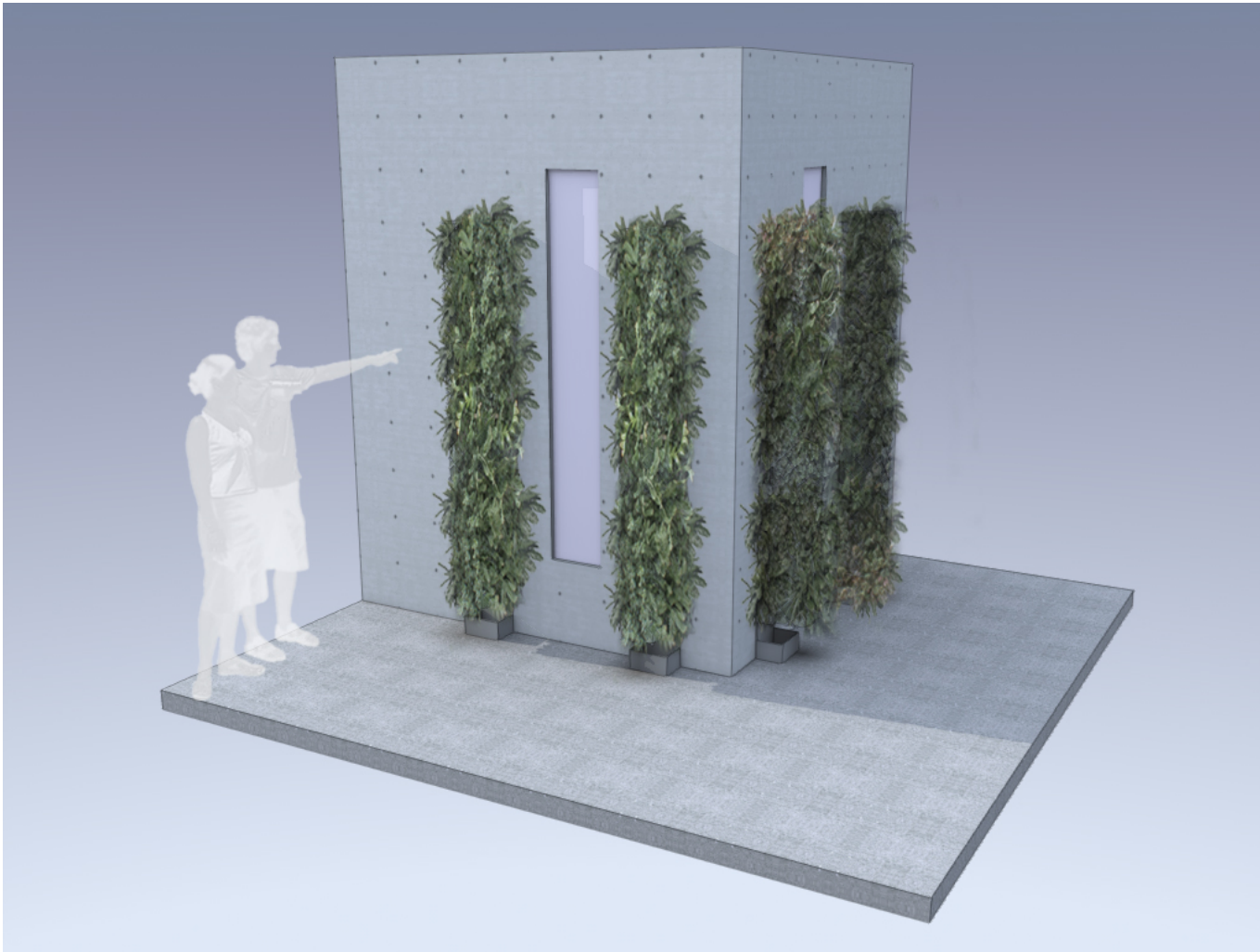
Elevation



0-04
rev B

GREEN BLADE - 3D VIEW 02

For visual reference only



0-05
rev B

GREEN BLADE - 3D VIEW 03

For visual reference only