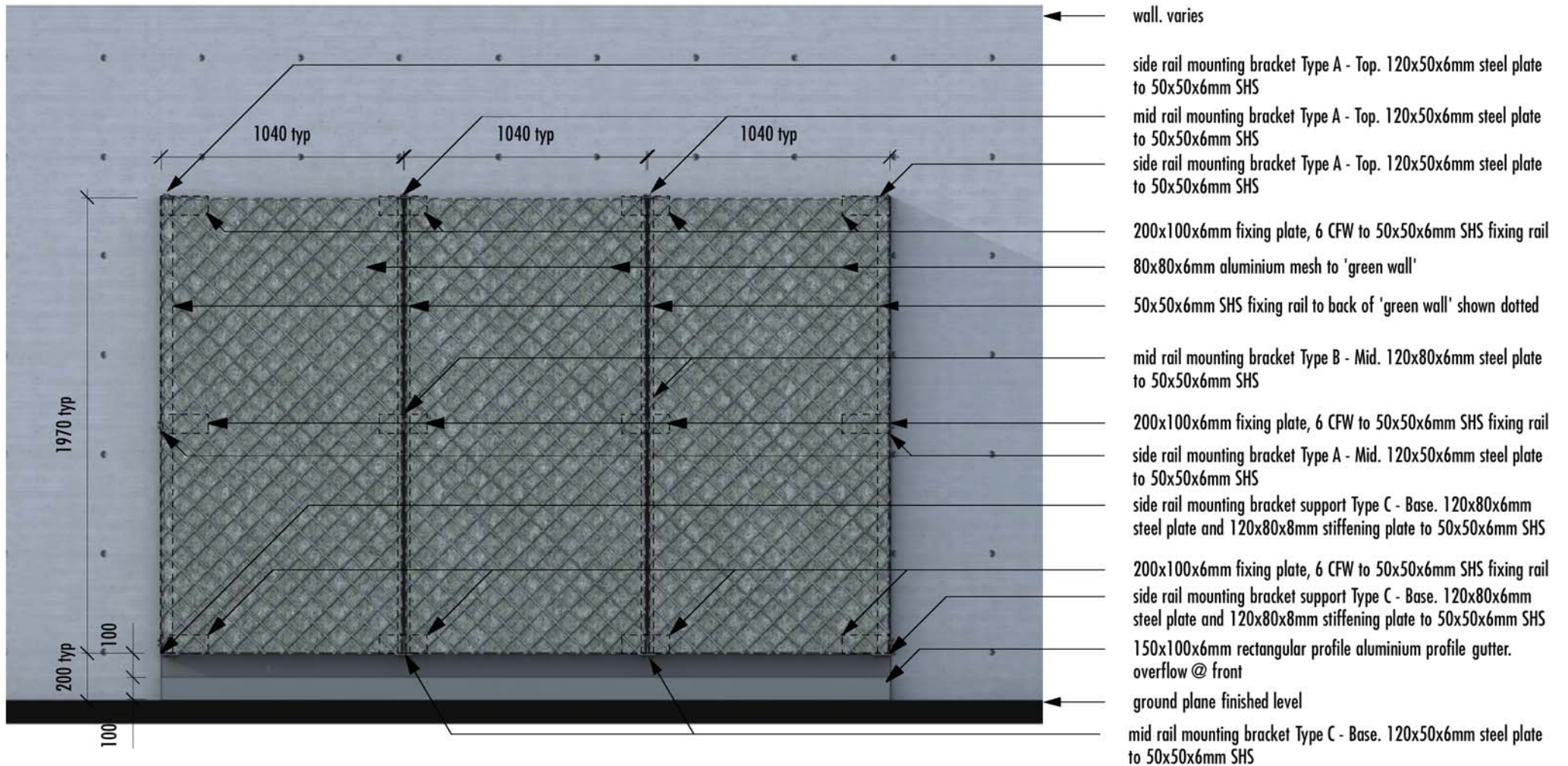


0-01
rev A

GREEN WALL - PLAN VIEW

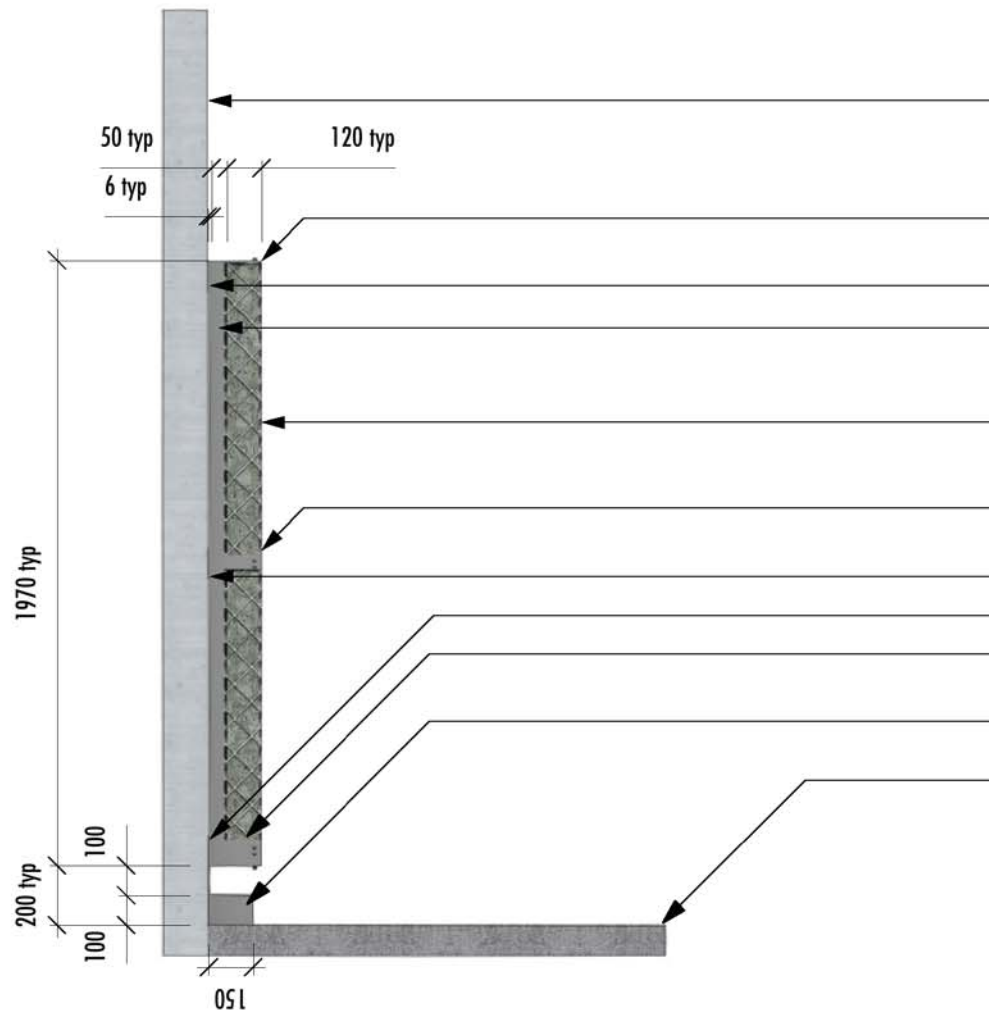
Plan



0-02
rev A

GREEN WALL - 3D VIEW

Front Elevation



wall. varies

side rail mounting bracket Type A - Top. 120x50x6mm steel plate to 50x50x6mm SHS
 200x100x6mm fixing plate, 6 CFW to 50x50x6mm SHS fixing rail
 50x50x6mm SHS fixing rail

80x80x6mm aluminium mesh to 'green wall'

side rail mounting bracket Type A - Mid. 120x50x6mm steel plate to 50x50x6mm SHS
 200x100x6mm fixing plate, 6 CFW to 50x50x6mm SHS fixing rail
 200x100x6mm fixing plate, 6 CFW to 50x50x6mm SHS fixing rail
 side rail mounting bracket support Type C - Base. 120x80x6mm steel plate and 120x80x8mm stiffening plate to 50x50x6mm SHS
 150x100x6mm rectangular profile aluminium profile gutter.
 overflow @ front
 ground plane finished level

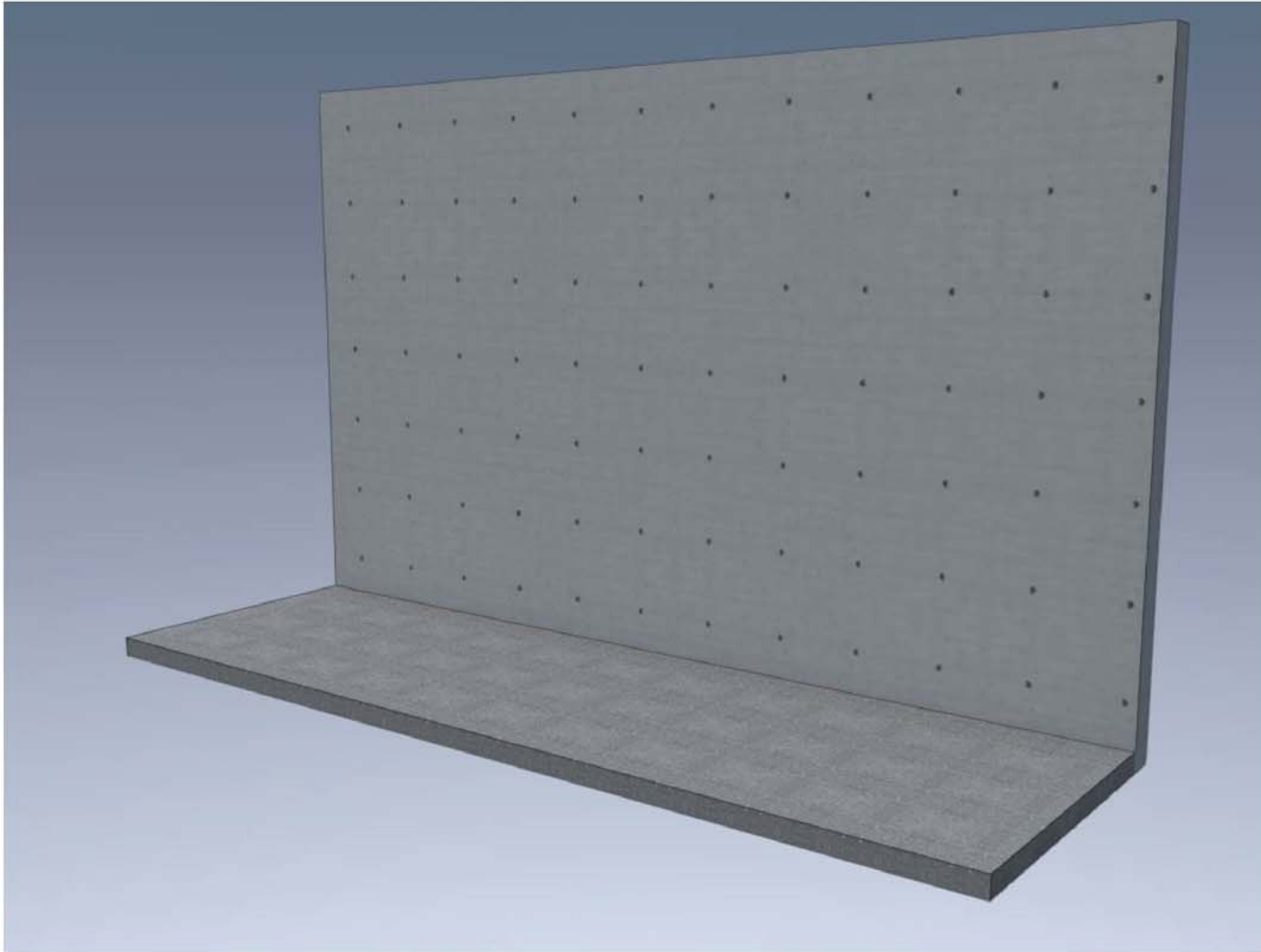
NOTE: all aluminium grade 6060 with grade 5356 weld filler wire
 NOTE: minimum fixing wall requirements. Blockwork: wall must be 140mm thick, 12MPa minimum block strength and be able to carry 1.1kn tension and 0.9kn shear at each fixing, to be checked by Eng. Concrete: wall must be 150 minimum thick, 25MPa minimum concrete strength and contain reinforcement. Brickwork: wall must be 140 minimum thick, 45MPa minimum brick strength and be able to carry 1.1kn tension and 0.9kn shear at each fixing, to be checked by an Eng.

0-03

GREEN WALL - 3D VIEW

rev A

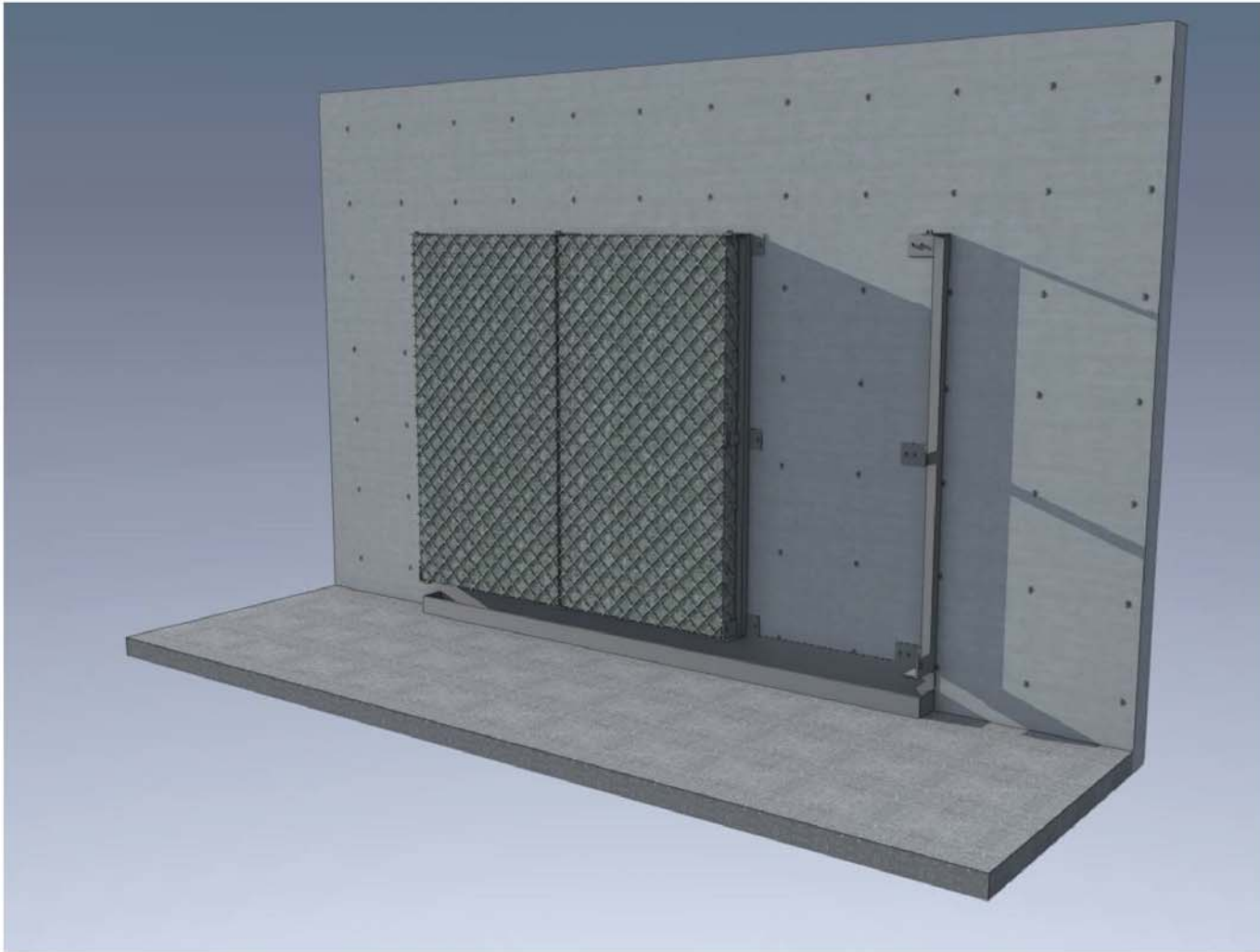
Side Elevation



0-04
rev A

GREEN WALL - 3D VIEW

For visual reference only



0-05
rev A

GREEN WALL - 3D VIEW

For visual reference only



0-06

GREEN WALL - 3D VIEW

rev A

For visual reference only